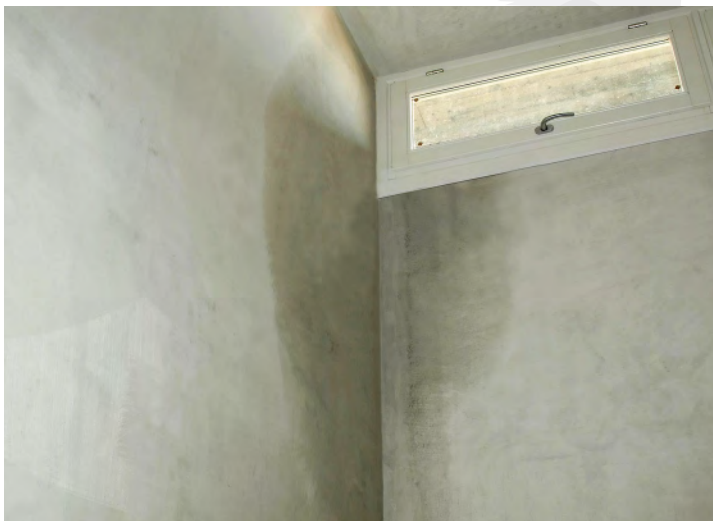


About Evercrete® PMC

Evercrete® Polymer Modified Cementitious (PMC) is an integrated polymer modified cementitious coating, which can be simply achieved by mixing a pre-packed dry-mixing powder with water, and consequent painting the slurry on various substrates. It protects a wide range of buildings and structural concrete components with good resistance to water, aggressive chemicals, long-term weathering and scratching. It is applicable for fixed structures subjected to long-term water immersion.

Where to use Evercrete® PMC

- Interior and exterior sealing and waterproofing of walls and floors with protections from cement sand mortar.
- Applicable for both positive and negative sides of water-receiving substrates.
- Ideal waterproofing of walls and floors in balconies, terraces and wet-rooms such as washrooms and bathrooms.
- Appropriate substrates: concrete, brickwork, precast surface, lightweight blocks etc.



Advantages of using Evercrete® PMC

- Applicable under high humidity environment.
- Pre-packed component: fixed mixing proportion, ensure the quality of work.
- Good workability, trowellable and brushable.
- Easy to use.
- Non-toxic and environmental friendly.
- Breathable.
- Anti-carbonation.

Technical data

| Product Consistency | Trowellable | Brushable |
|---------------------------------------|-------------|-------------|
| Compressive Strength at 28 days (MPa) | 52 | 50 |
| Flexural Strength at 28 days (MPa) | 10 | 8.5 |
| Bond Strength at 28 days (MPa) | 1.5 | 1 |
| Surface Water Absorption (ml/min) | 0.005 | 0.005 |
| Typical Mixing Water (litres) | 4.5 – 5 | 5.25 – 5.75 |
| Wet Density (kg/m ³) | 1950 | 1900 |
| Coverage (kg/mm/m ²) | 1.6 | 1.55 |
| Packaging | 25 kgs/bag | |
| Shelf Life | 12 months | |

Note: The above are typical laboratory test results and can vary slightly depending on ambient and substrate conditions during application.

“Concrete Solutions That Stand The Test Of Time”

Application

Surface Preparation

Substrate must be clean from particles, oil, grease and other contaminants. To clean the substrate with water jet to remove dust and loose particles. It is recommended to apply Evercrete® Deep Penetrating Sealer (DPS) before apply the Evercrete® Polymer Modified Cementitious (PMC) to have better adhesion and waterproofing performance.

Mixing and Application

Mix a bag of dry mix powder (25 kgs) with 4.5 – 5 litres (trowellable) / 5.25 – 5.75 litres (brushable) of water using an electric mixer for about 5 minutes or until a lump-free homogenous mix is achieved.

The mixed slurry should be applied by trowel or stiff brush onto the substrate within the working life which is dependent upon ambient temperature and relative humidity. It is recommended to apply the waterproof slurry in 2 coats of 1 mm thickness. Apply the slurry onto the substrate surface evenly in one direction with an action forcing the slurry to seal minor cracks and cover surface irregularity. When applying second coat, previous coat should be slightly dried and the following coat is recommended to apply in perpendicular direction.

It is recommended to allow 1 to 2 days before other finishing materials or protective layer is applied over the hardened slurry surface. Cement sand mortar can be applied on the Evercrete® Polymer Modified Cementitious (PMC) as a protective layer.

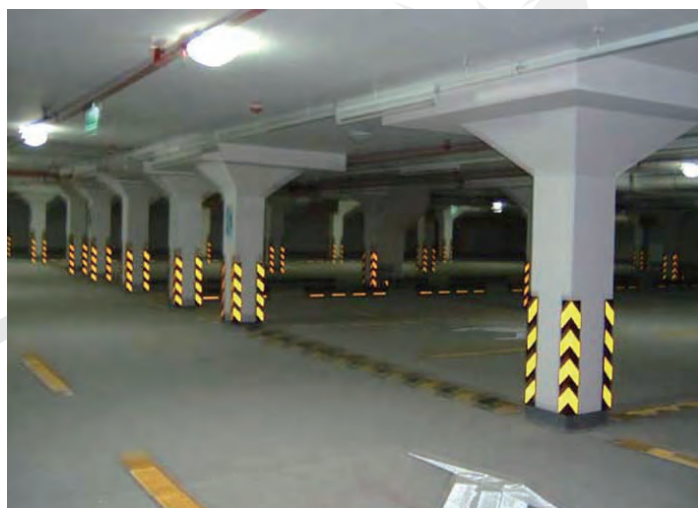
Limitation

Evercrete® Polymer Modified Cementitious (PMC) is not advisable to be used at the corner or substrate with potential movement.

Storage and packing

Evercrete® Polymer Modified Cementitious (PMC) is delivered in 25 kgs bag. Shelf life is 12 months if the product is kept in a dry place with its original unopened bags.

Direct sunlight must be avoided and protected from rainfall.



For more information on Evercrete® products please visit our website at:

www.evercrete.com

Evercrete Corporation

Miami Center
201 South Biscayne Blvd, Floor 28
Miami FL 33131-4325
USA
Tel: 305 538-8321
Fax: 305 538-8739

For distributors visit:

www.evercrete.com info@evercrete.com

Evercrete